

ASHUTOSH ratnakar

*"Art is not a mirror held up to reality, but a hammer with
which to shape it."*

Bertolt Brecht
(German Playwright)





“As sentient beings it is our nature to perceive life and construct meaning out of it. Expression, therefore, is a basic human need.”

Ashutosh Ratnakar



TABLE of content

1. INTRODUCTION



2. THE ARTIST



3. THE ART





THE ARTIST

ashutosh ratnakar

When we are uprooted from reality, the way we experience the world is fragmented, broken and incomplete. Such an existence becomes a breeding ground for resentment, loneliness and hopelessness. It leads to a self-perpetuating cycle of misery.

How do we break the cycle?

I believe that art has the power to speak to our innermost selves, open dialogues that can bring inner transformations.

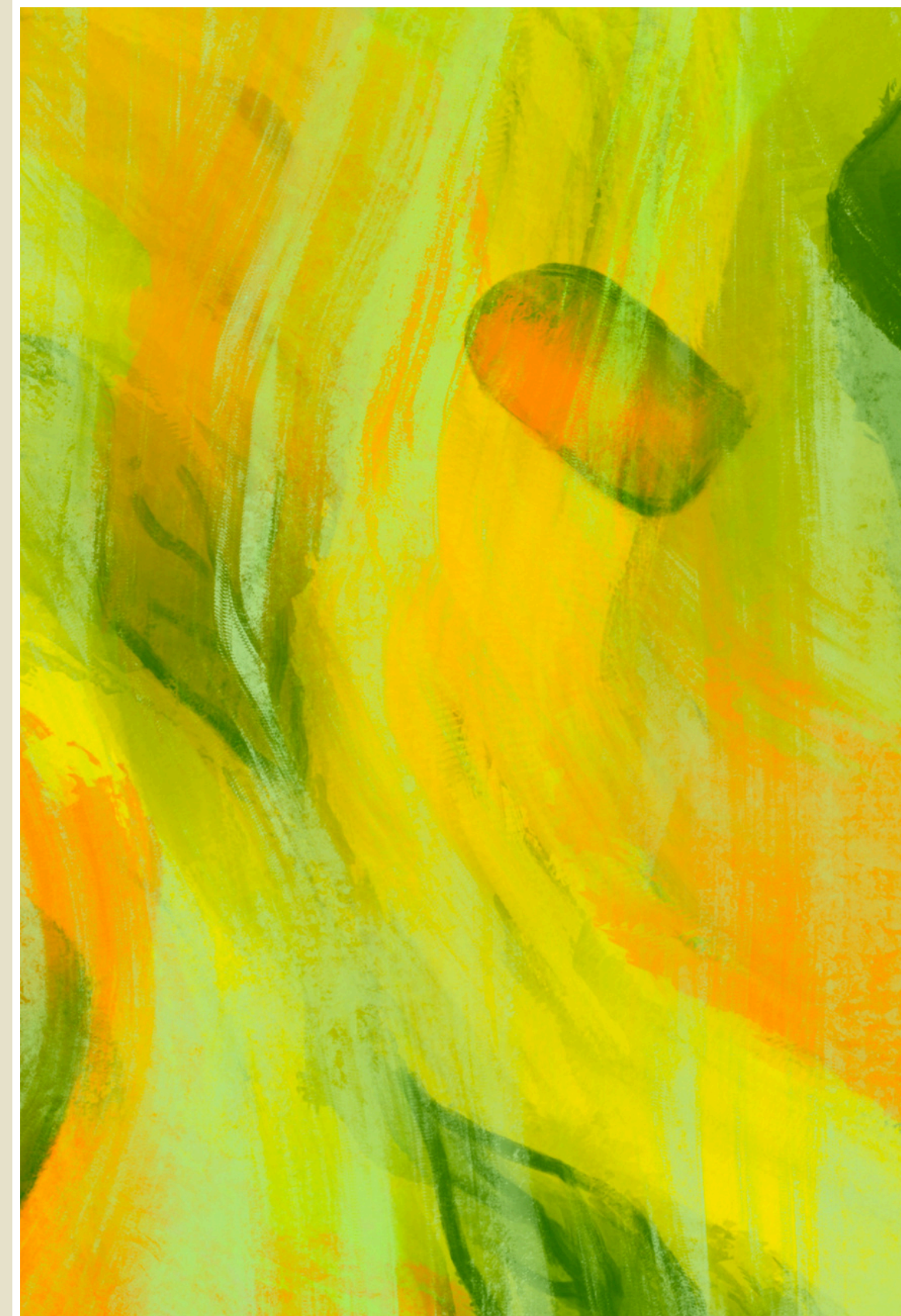
As an artist I aim to design artistic experiences that facilitate such inner transformations. Only a man at peace can create a peaceful world.

THE JOURNEY of art

Ashutosh was interested in arts since childhood. However, like most of the kids in his small town he had no clue how one could make a career in arts.

As an IT professional, he felt disconnected from the real world and decided to work for non-profits instead. After a decade long successful career he decided to take the risk of pursuing his passion for arts.

He learns sculpture at Triveni Kala Sangam, enjoys painting at his home studio and makes comic books for fun.
Also, he is building a community of artists for artists - Art of Expression India.



SCULPTURES

by a. ratnakar



INNER PEACE

30CM x 15CM x 30CM

Fiberglass, Marble Ash & Sheesham Wood

2024

“न ही वेरेन वेरानि, सम्मन्तीध कुदाचनं
अवेरेन च सम्मन्ति, एस धम्मो सनन्तनो”

हिंदी: वैर से वैर शांत नहीं होता, अवैर से ही वैर शांत होता है। यही
सनातन धर्म हैं।

English: Hatred is, indeed, never appeased by
hatred in this world. It is appeased only by love
and kindness. This is the ancient law.

~ Dhammapada Verse 5

DEVI UMA

35CM x 9.5CM x 9.5CM

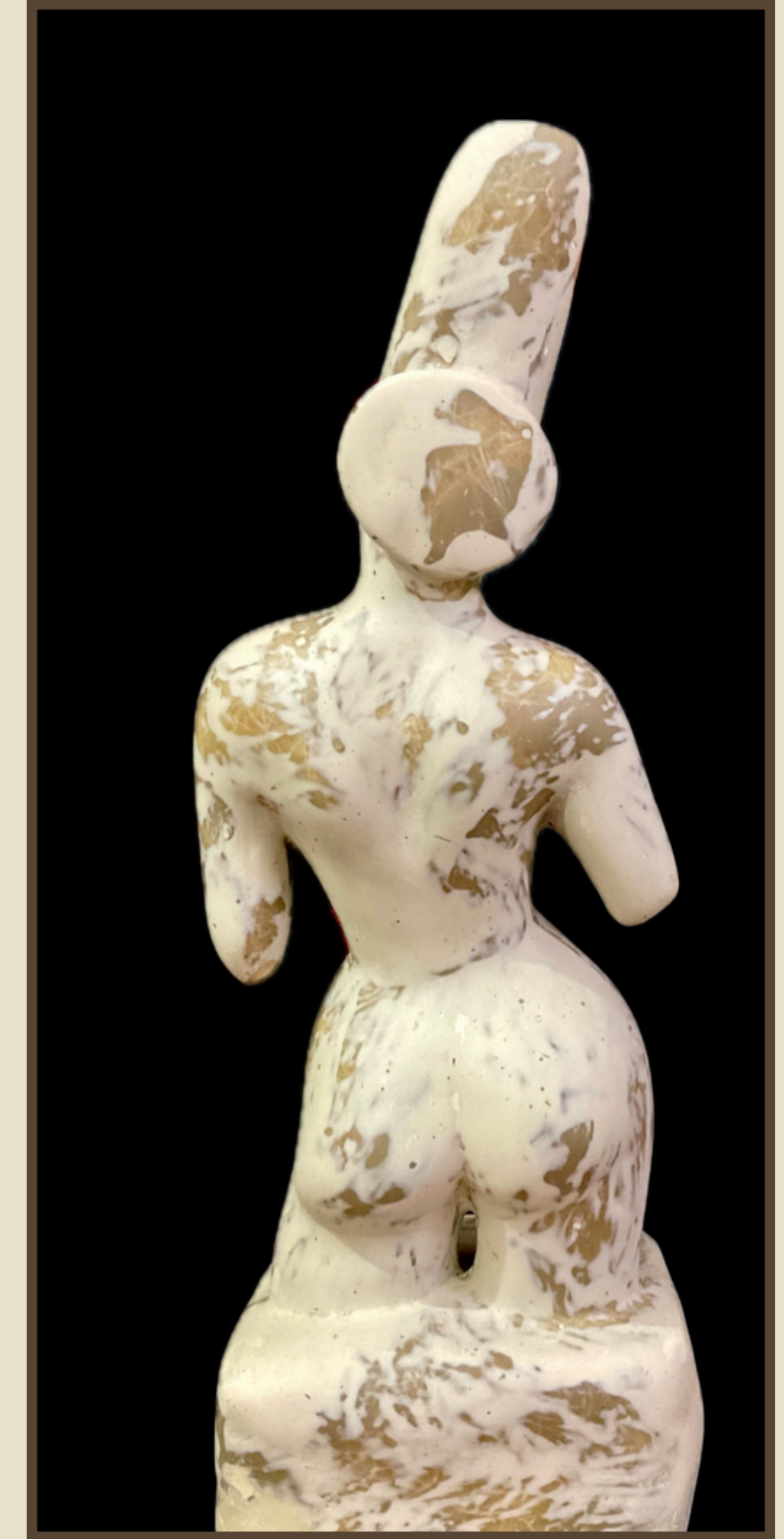
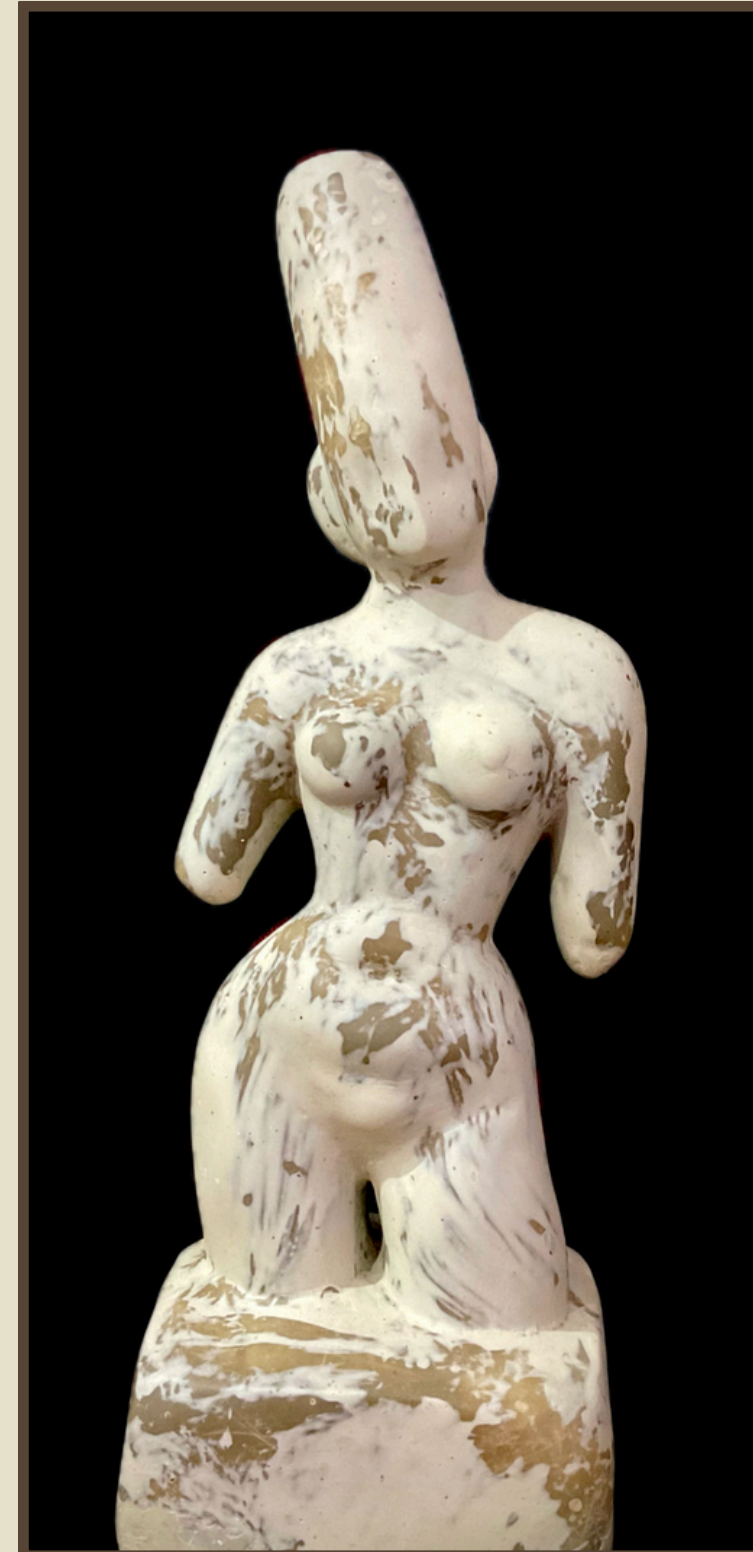
Fiberglass

2025

This artwork is a tribute to the artists of ancient India, who dedicated their lives to embody the eternal nature of life into ephemeral forms.

In my studies I found that symbols of fertility are quite common in all ancient cultures. People have been worshipping goddesses, snakes, bulls, the phallus, etc. hoping to harness the rejuvenating force of life.

The representation of Devi Uma, the consort of Lord Shiva and a symbol of the feminine force of nature, throughout Indian history inspired me to come up with my own interpretation.





INNER TURMOIL

52CM x 25CM x 45CM
Fiberglass & Acrylic Paint
2025

"परे च न विजानन्ति, मयमेत्थ यमामसे
ये च तत्थ विजानन्ति, ततो सम्मन्ति मेधगा"

हिंदी: अज्ञानी लोग नहीं जानते कि हम सब यहाँ (इस संसार) से जाने वाले हैं। जो इसे जान लेते हैं उनके झगड़े शांत हो जाते हैं।

English: People, other than the wise, do not realize, "We in this world must all die," (and, not realizing it, continue their quarrels). The wise realize it and thereby their quarrels cease.

~ Dhammapada Verse 6

HOMECOMING

a painting series

IN SEARCH OF ROOTS

Hope & Resilience

We are a part of nature and without a symbiotic relationship with it we end up living a life devoid of meaning and purpose.

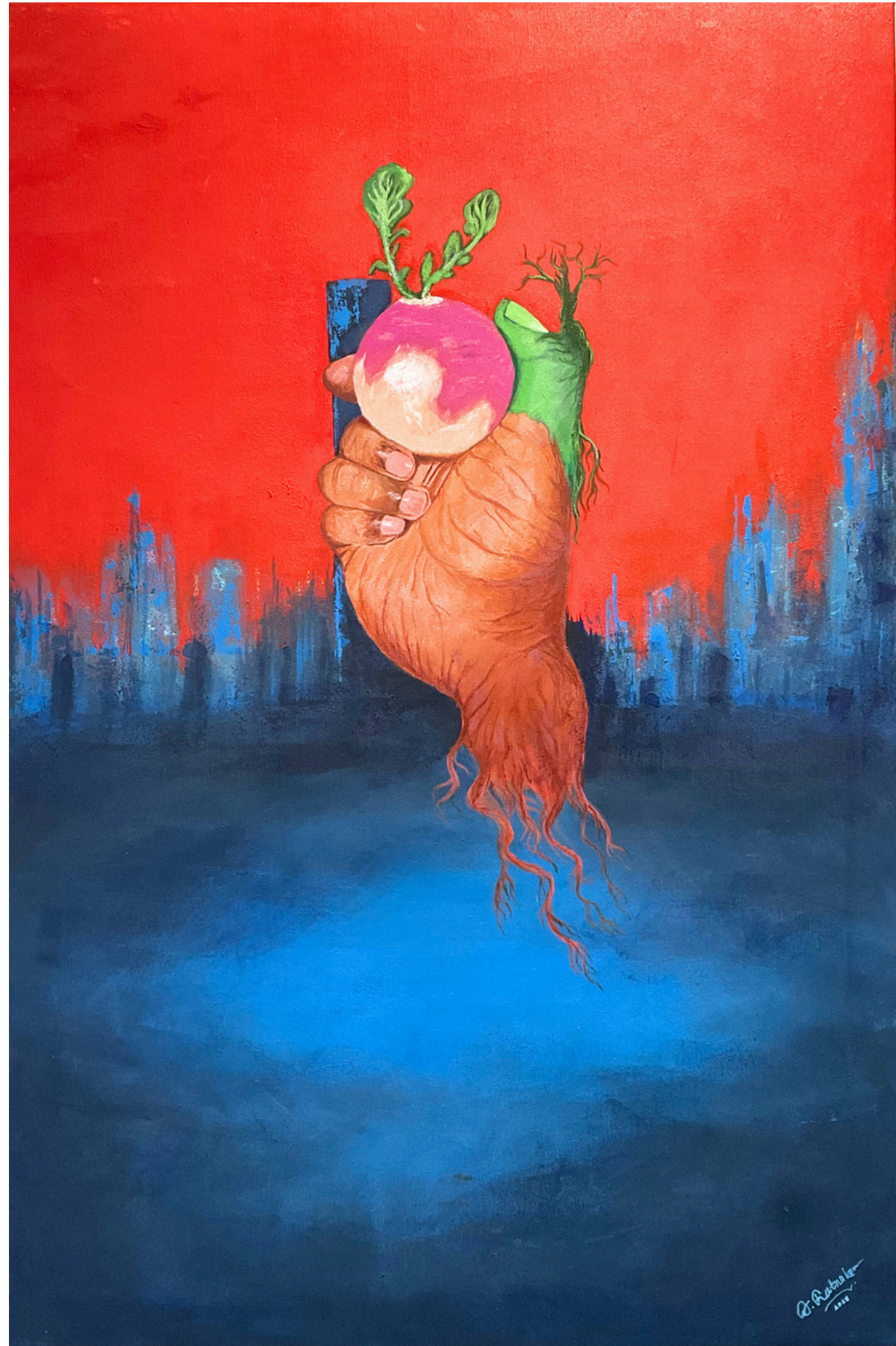
It is akin to a ship without a destination, a person without a home.

Growing up in a small town in a house by a narrow stream life was simple. Watching sunrise and sunsets, finding nests and hives, snakes and frogs, playing in the mud and helping our grandma grow vegetables occupied most of our early childhood.

Now that I have lived for over 20 years in the capital I realise I have never felt at home here. I do like the comfort and convenience, however a feeling of loss always catches up.

How do I fill this void?
Am I the only one who feels this way?
Is it the best life has to offer?

'Art Series - Homecoming' tries to capture the feeling of alienation, loss, nostalgia, resilience and hope.



HOMECOMING 1 - THE HEART OF AN ARTIST

Acrylic on Canvas - 24 in X 36 in
2025

I grew up in a small town in a house by a narrow stream. Life was simple. Watching sunrise and sunsets, running around looking for nests and hives, going to the river to find fish, snakes and frogs, helping grandma grow vegetables and playing in the mud occupied most of my early childhood.

Now that I have lived for over 20 years in the city I realise I have never felt at home here. Not that I do not like the comfort and convenience of the city, it is just that I feel uprooted and lonely. How do I fill this void? Am I the only one who feels this way? Is it the best life has to offer? Is there any hope?

This artwork tries to capture the feeling of alienation, emptiness, nostalgia and hope. It recognises how we are a part of nature and without a symbiotic relationship with it we end up living a life devoid of meaning and purpose.



HOMECOMING 2 - ANCHOR

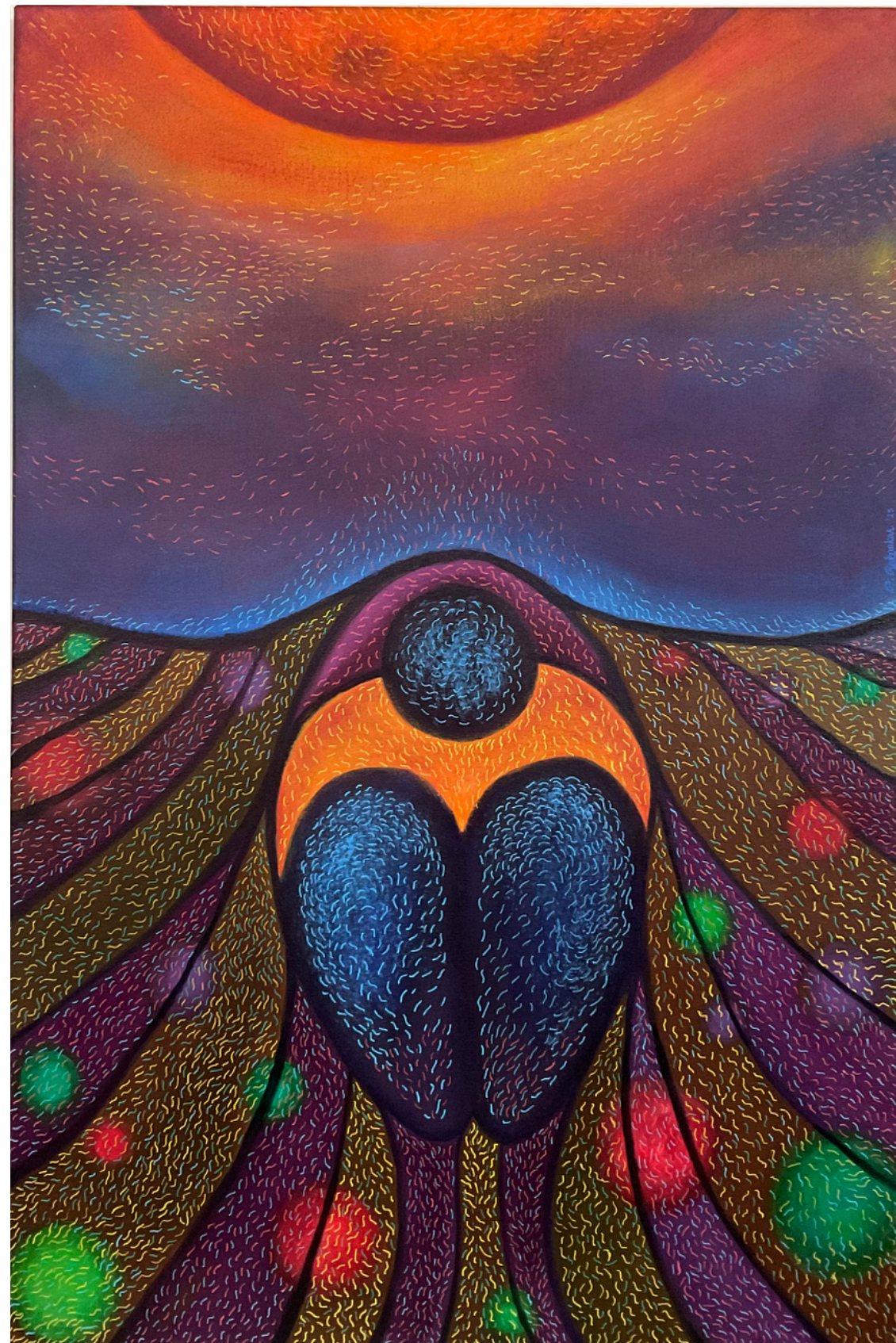
Acrylic on Canvas Board - 16 inch x 20 inch
2025

What is home?
Is it a place? Time? Feeling?
Or is it a combination of all of the above?

For me home is a place where you feel safe to be yourself.
Home is a place that anchors and grounds.
It nurtures resilience, hope, grit and love.

When I lost my parents I felt as if I was left alone in the ocean without my anchor. And I realised, for the first time, what it feels like to lose your home.

This artwork is dedicated for those in search of an anchor in their lives that they can call home.



HOMECOMING 3 - BREAKTHROUGH

Acrylic on Canvas

24 inch x 36 inch

2025

A mango seed looks nothing like a mango tree. If someone were to tell it otherwise, it would naturally be skeptical and look at them in disbelief.

When planted under the soil all that the seed can see is darkness. Scared and afraid, it toughens its shell. It yearns for light. But yearning isn't hope. Hope is rather rooted in resilience. It is the courage to trust your gut in the face the uncertainty and chaos. It is the spirit to hold on to your values when the opposite seems more rewarding.

So, the seed is on a journey of self-discovery. And it is not alone. The universe is interconnected and thrives on symbiotic relationships. So, the clouds water the seed and the soil feeds it with nutrients. And the miracle of life begins. The water softens its shell, nutrients flow inside it and a part of the seed shoots to see the light. It penetrates the layers of darkness to finally rise above the ground.

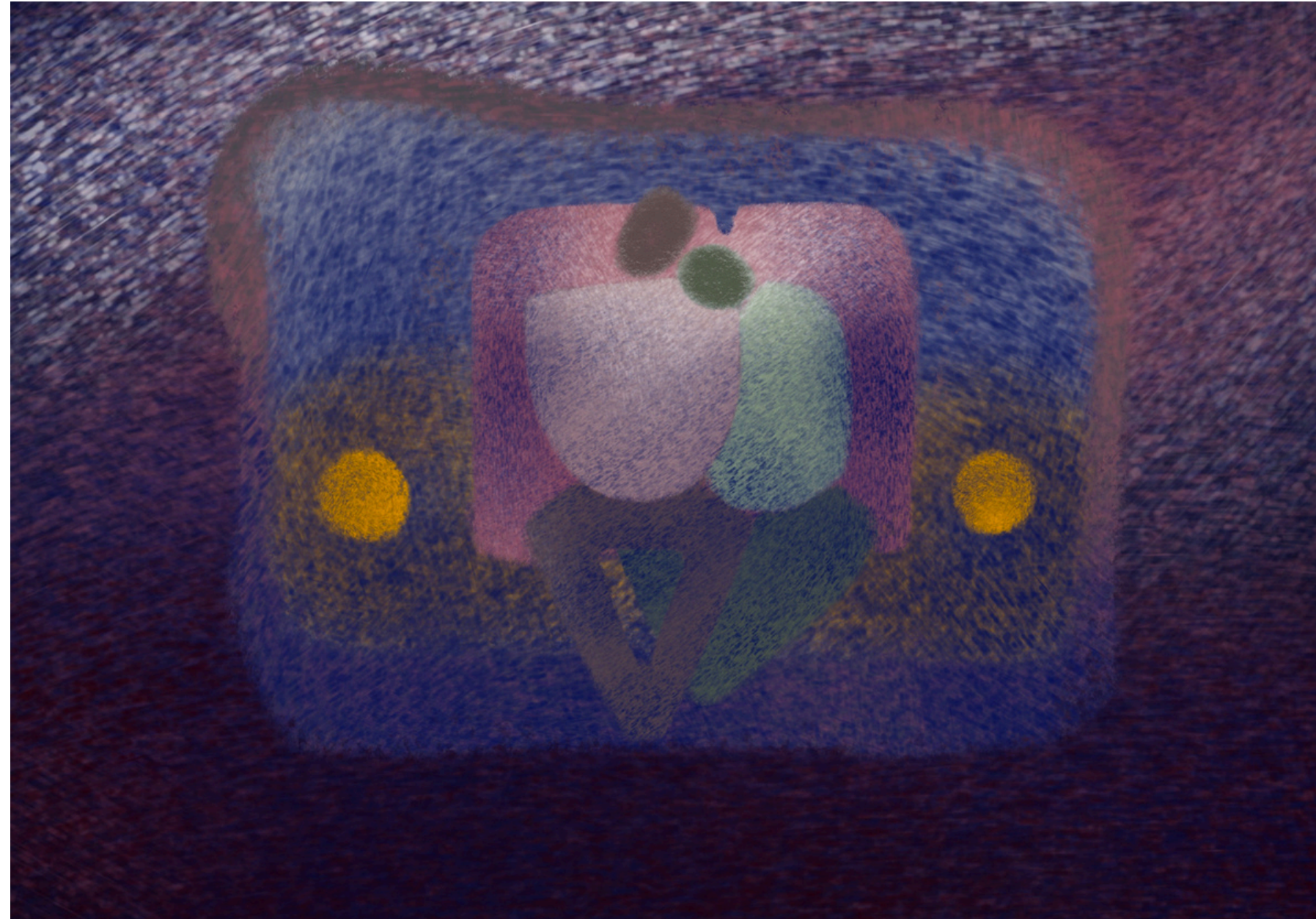
What a breakthrough!

In a way, each one of us is like a seed with the promise of tomorrow. We dream, we plan, we fail, we rise and we prevail to enrich the diverse expression of the universe.

This artwork is dedicated to all those who choose to rise after a fall, with resilience and hope in their hearts.

HOMECOMING 4 - TILL DEATH DO US APART 1

Digital - 18 inch x 12.5 inch
2025



What is love?

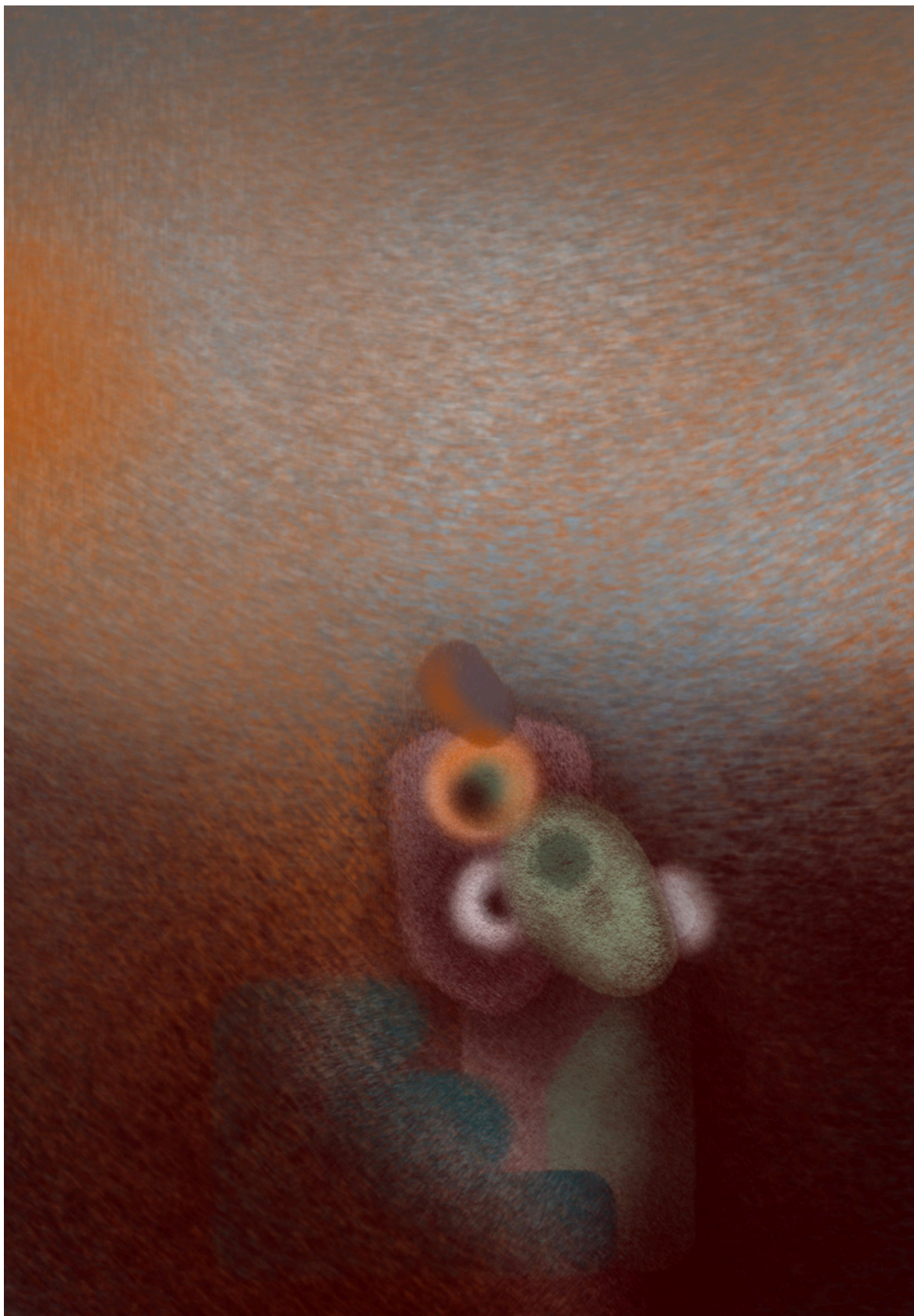
It is the type of question that's best left unanswered. Love is subjective. Each person and each generation finds its own definition of love.

We all grow up observing the dynamic of relationships unfold around us. While movies, books and poems do influence our ideas of love, we cannot discount the impact of our social conditioning on how we perceive love. And then there is first hand experience of being in a relationship which supersedes it all.

On one hand when we look at old couples fighting, we wonder how they survived all those years of marriage. On the other hand we witness their love for each other, especially in time of stress such as medical emergency, it melts our hearts.

This painting is inspired by the love between my parents that grew stronger towards the end of their lives. My mother was on dialysis, required it twice a week and the closest treatment centre was 200kms away. Due to financial problems, my parents would take a bus rides early morning and late nights.

This painting is dedicated to thousands of people like them who endure it all for love.



HOME COMING 5 - TILL DEATH DO US APART 2

Digital - 18 inch x 12.5 inch
2025

What does it take to climb a 3 stepped stair?

A helping hand of a loved one is all we need at the end of our lives. Hence, we try our best to live a life of compassion and empathy. We nurture these values in our children throughout their lives because we know that human values are the foundation of a civilised society.

The public buses in rural India are mostly high floored, which makes it difficult to access for the old, the unwell and the disabled. The problem is not limited to public transport. Public buildings, hospitals, public places, etc. have limited accessibility too. Patients often rely on family members to help them through the various processes in hospitals.

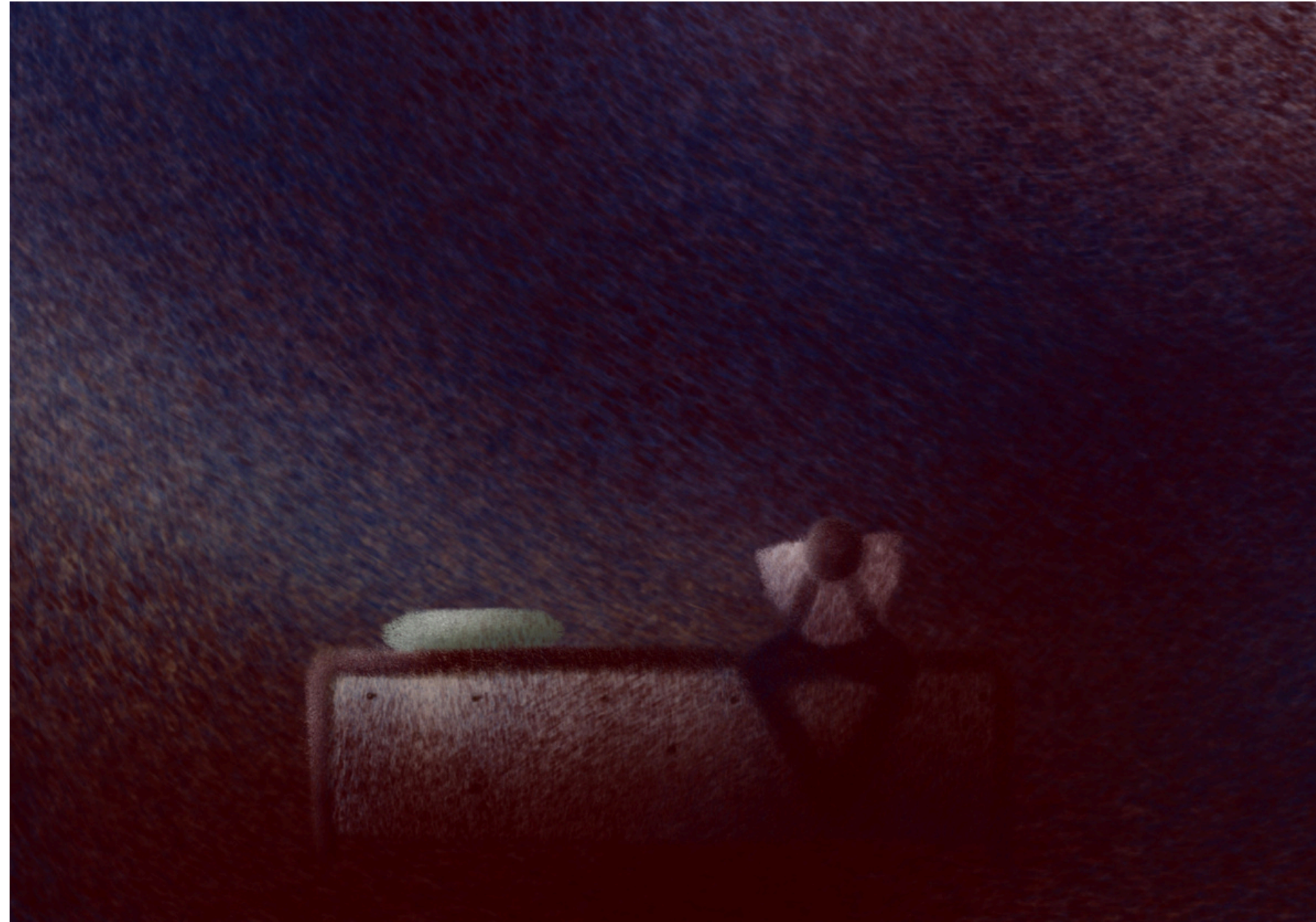
While it seems like a no big deal, in a third world country it can be a challenging task for the caregivers. The reality of our medical facilities was exposed during the COVID-19 crisis. We could watch distressed caregivers running pole to pole to get beds for their family members.

This painting is dedicated to all the caregivers whose compassion knows no bounds. It is also a reminder of the love and kindness with which my father took care of my mother. He would carefully help her get down from the bus, climb the tuktuk, the hospital stairs, etc. If they had to stay overnight, he would sleep on the hospital bench.

His love was her lifeline.

HOMECOMING 6 - TILL DEATH DO US APART 3

Digital - 18 inch x 12.5 inch
2025



What does it feel like losing a loved one?

Death is a forbidden word in India. People alternatively use seemingly milder words such as expire, no more, passed away, serious, etc. It's hard to explain it to a native speaker why even well educated Indians with a sound knowledge of grammar avoid it in formal conversations.

Death is scary and inevitable so we have mitigated the fear around it by consoling in the cyclic nature of life and concepts of rebirths. Yet it haunts us.

The elderly are the worst affected. If one of the partner dies early, which is often the case, the life becomes a burden for the other.

They suddenly realise that the trivial marital disputes, the constant nudging and bantering were keeping their lives busy.

What's left after is stalking loneliness and an irreparable loss. Sleepless nights, forgetfulness, and melancholia takes over and consumes one's existence bit by bit.

URBAN RESPITE

Cityscapes Series

A RESPITE from Urban business

Long working hours, low paying jobs, crowded housing, rising rents, little personal time and transactional relationships are what most Indians trade for a stable livelihood in urban India.

As a migrant from a humble background I identify myself most with the migrant workers who come to cities hoping to provide a better future to their families.

It may seem superficial as I have had a decent education and I am financially better off than an average daily wage earner living in a slum. However, some human emotions are transcendental in nature.

The longing for home and connection is one of them.

The noises, the chaos on the roads, and the pressure of keeping a job is so overwhelming that we often look for moments of respite in our daily lives. A moment that grounds us in present and helps us stay sane and functional.

In this series I try to capture such moments of respite across the division of the socio-economic realities of urban India.

URBAN RESPITE 1 SLICES OF THE SKY

8" x 10" (inches)
Acrylic Paint on Canvas Board
2025



URBAN RESPITE 2 THE MOON IN MY SLICE

10" x 12" (inches)
Acrylic Paint on Canvas Board
2025



URBAN RESPITE 3
THE NIGHT, THE MOON AND ME

12" x 24" (inches)
Oil Paint on Canvas
2025





Abstract Series

ICE CANDY

Rohit
May 25

EXUBERATING Youth & Nostalgia

Who doesn't remember the joy of having an ice-cream candy on a lazy summer day!

I fondly remember the tinkling sound of the ice-cream cart, me cajoling my mother to give a couple of rupees so that I could enjoy some ice candies and trying to freeze mango juice hoping to make ice candy bars at home.

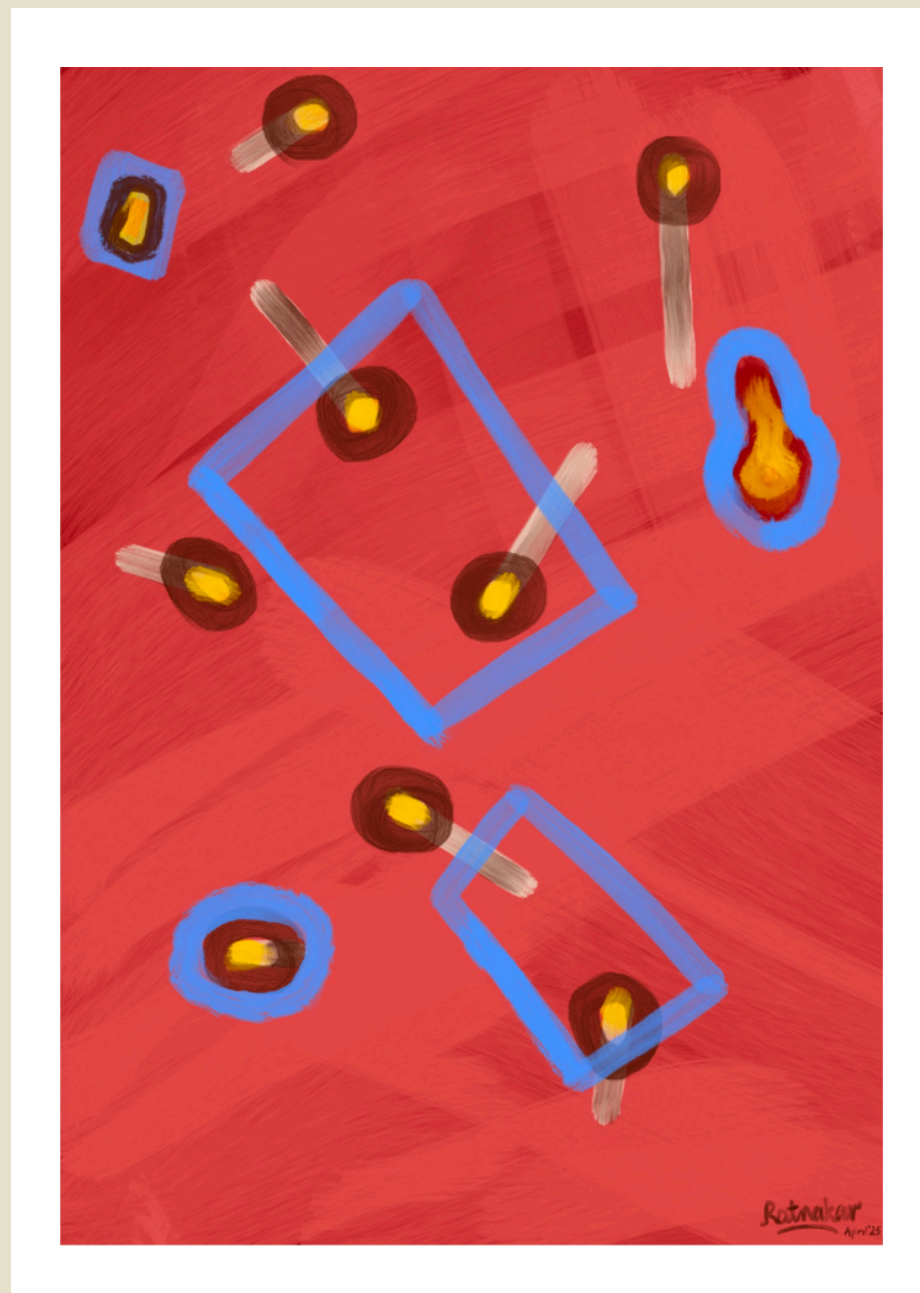
Such beautiful memories!

In this abstract series - 'Ice Candy' I have tried to capture the nostalgia of childhood and the simple joys of life.

The colour palette and composition is inspired by fruits and ice-cream candy bars.

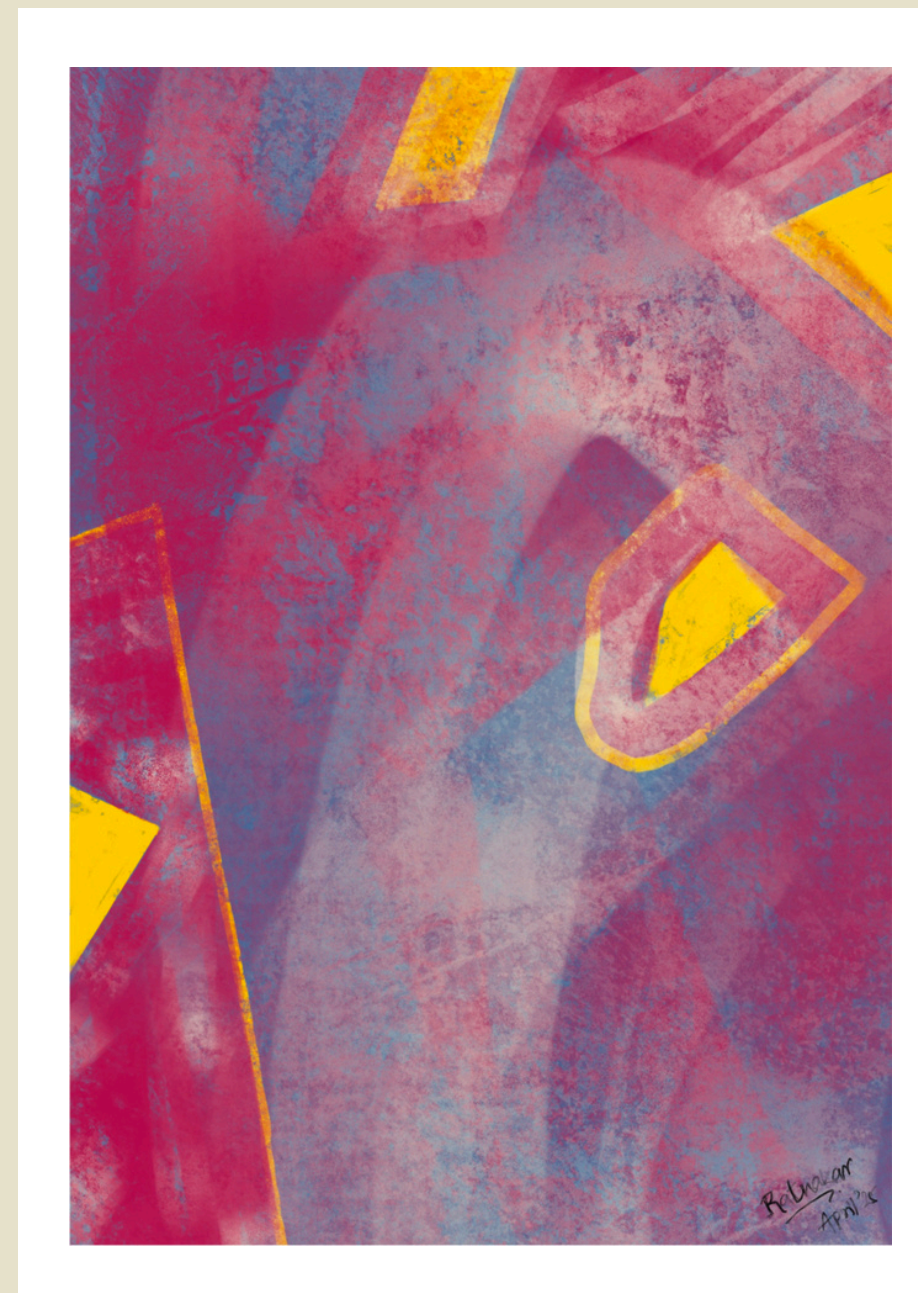
ICE CANDY 1 RED CANDY

32 cm x 46 cm
Digital
2025



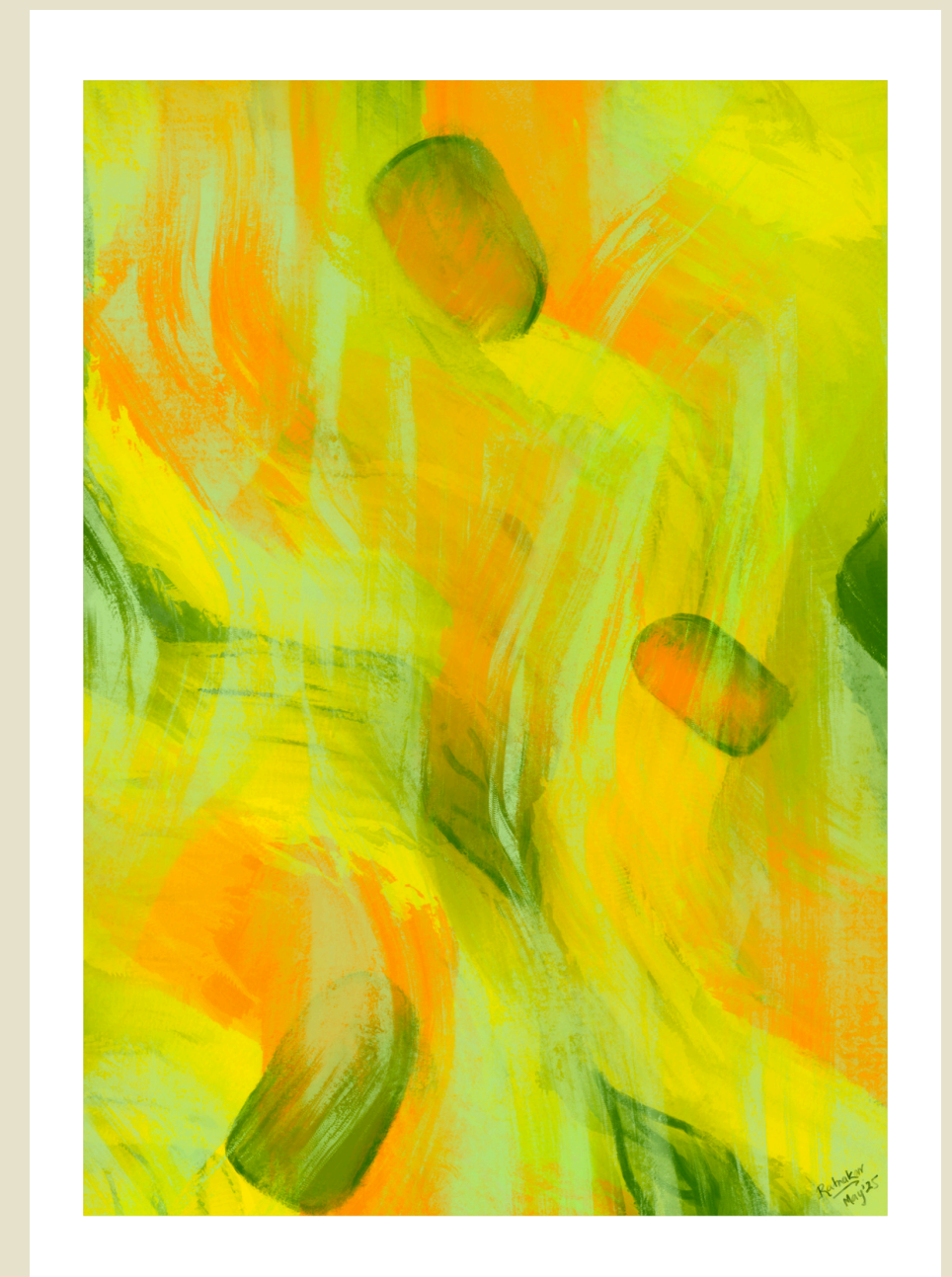
ICE CANDY 2 RASPBERRY

32 cm x 46 cm
Digital
2025



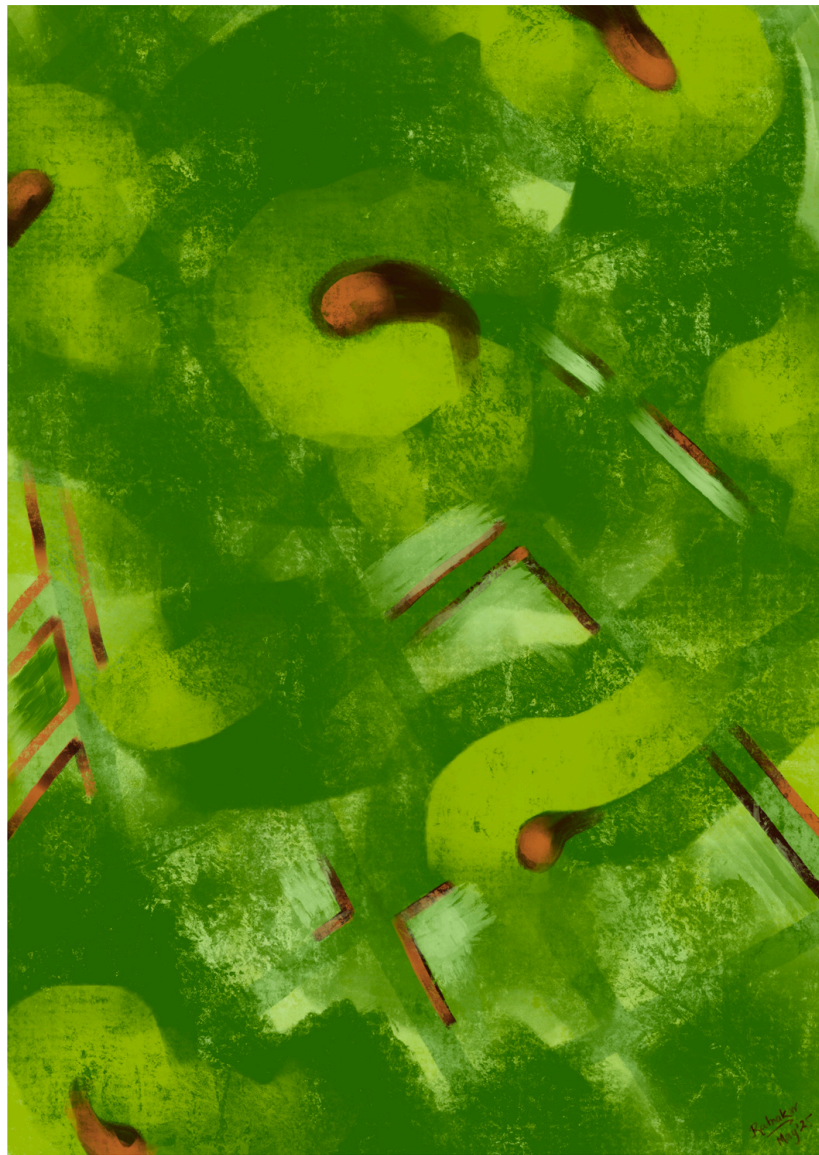
ICE CANDY 3 PAKKA MANGO

30 cm x 42 cm
Digital
2025



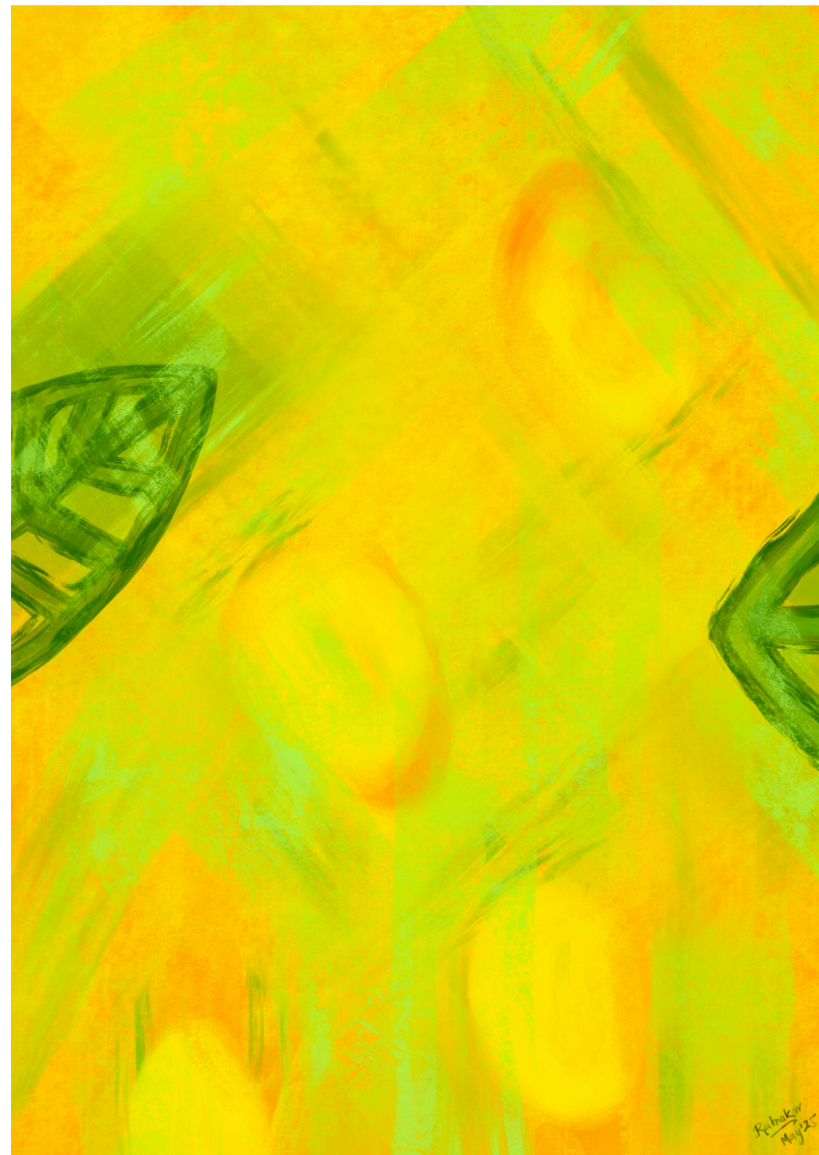
ICE CANDY 4 KACCHA MANGO

30 cm x 42 cm
Digital
2025



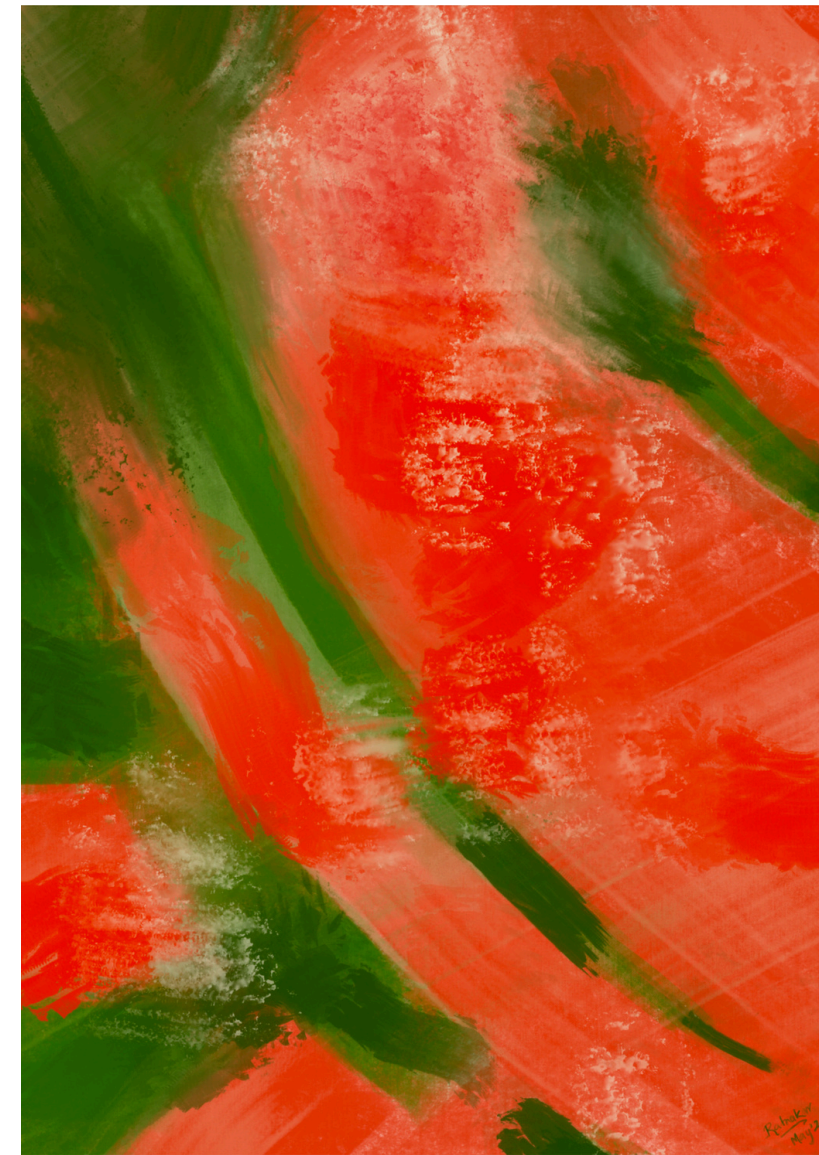
ICE CANDY 5 RATNAGIRI ALPHONSO

30 cm x 42 cm
Digital
2025



ICE CANDY 6 WATERMELON

30 cm x 42 cm
Digital
2025





EXHIBITIONS

List

EXHIBITIONS - 2025

- Group Exhibition of Sculpture at Triveni Kala Sangam, New Delhi, June 2025
- Group Exhibition of Sculptures and Painting at CSOI, New Delhi, June 2025
- Group Exhibition of Sculpture at Triveni Kala Sangam, New Delhi, April 2025
- Group Exhibition of Sculptures at Gandhi Darshan Art Gallery, New Delhi, Feb 2025
- Mask Installation for BuShow 4.0 at the Embassy of Hungary, New Delhi, Feb 2025



KEEP IN **touch**

+91 8447733140

ashutosh@artofexpression.in

<https://artofexpression.in>



THANK YOU
ashutosh ratnakar

*All pictures used in this
document are artworks by
Ashutosh Ratnakar.*

*Kindly respect the @copyright
laws.*